

MAHENDRA HATDIA
Cell : +91-8452828260



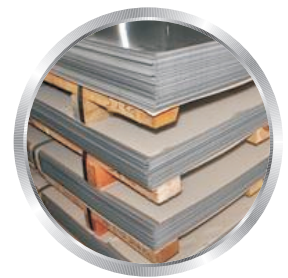
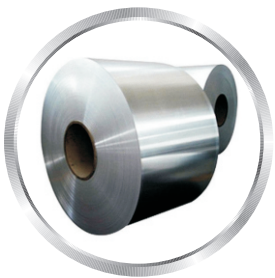
GOGA STAINLESS

FERROUS & NON-FERROUS METALS

Stockists & Supp. of : Stainless Steel AISI 304, 304L, 316, 316L, 310, 409, 410, 430, Plates, Rods, Square, Hex, Seamless & ERW Pipes, Tubes, Copper, Brass, Monel, Nickel, Alloy Steel etc. **Specialist in. : S. S. FORGING & BUT WELD PIPE FITTINGS.**

w e . s u p p o r t . t h e
i n n o v a t i o n s . o f . c u s t o m e r s

Leak-Proof
Flow & Control The Best Partner
of Value Creation
Solution Partner



Plot No-408/428, Har-Har Wala Bldg, House No-62A, 3rd Floor, P.B. Marg, Mumbai-400 004
MUMBAI-400004 • Tel. : +91-22-6659 5141 • Cell : +91-84528 28260
E-mail : gogastainless@gmail.com • Web.: www.gogastainless.com



GOGA STAINLESS
 Stockist Suppliers & Dealers of:
 Pipes, Sheets, Coil, Plates, Tubes,
 Flanges, Fittings, Welding Consumables, Tank Vessels, Industrial Raw Materials
 & Heavy Engineering Activities & Constructions

+91 845 392 8300
 +91 22 6888 8141
 gogastainless@gmail.com
 www.gogastainless.com

STAINLESS STEEL FLANGES, CARBON STEEL FLANGES, TITANIUM FLANGES & INCONEL FLANGES

GOGA STAINLESS

+91 845 392 8300
 +91 22 6888 8141
 gogastainless@gmail.com
 www.gogastainless.com

GOGA STAINLESS
 Stockist Suppliers & Dealers of:
 Pipes, Sheets, Coil, Plates, Tubes,
 Flanges, Fittings, Welding Consumables, Tank Vessels, Industrial Raw Materials
 & Heavy Engineering Activities & Constructions

+91 845 392 8300
 +91 22 6888 8141
 gogastainless@gmail.com
 www.gogastainless.com

GOGA STAINLESS

+91 845 392 8300
 +91 22 6888 8141
 gogastainless@gmail.com
 www.gogastainless.com

GOGA STAINLESS
 Stockist Suppliers & Dealers of:
 Pipes, Sheets, Coil, Plates, Tubes,
 Flanges, Fittings, Welding Consumables, Tank Vessels, Industrial Raw Materials
 & Heavy Engineering Activities & Constructions

+91 845 392 8300
 +91 22 6888 8141
 gogastainless@gmail.com
 www.gogastainless.com

STAINLESS STEEL VALVE, CARBON STEEL VALVE, BRASS VALVE

GOGA STAINLESS

+91 845 392 8300
 +91 22 6888 8141
 gogastainless@gmail.com
 www.gogastainless.com

GOGA STAINLESS
 Stockist Suppliers & Dealers of:
 Pipes, Sheets, Coil, Plates, Tubes,
 Flanges, Fittings, Welding Consumables, Tank Vessels, Industrial Raw Materials
 & Heavy Engineering Activities & Constructions

+91 845 392 8300
 +91 22 6888 8141
 gogastainless@gmail.com
 www.gogastainless.com

STAINLESS STEEL DESIGN SHEET OF HOUSE OF INTERIOR

GOGA STAINLESS

+91 845 392 8300
 +91 22 6888 8141
 gogastainless@gmail.com
 www.gogastainless.com

Company Profile

GOGA STAINLESS. was established in 2010 and started as a Butt Weld Pipe Fittings trading company in the beginning. GSEC has grown up rapidly to be a global fitting supplier based on strong financial structure, large volume of inventory/stock, biggest manufacturing facilities, accumulated technologies and experiences. We have supplied our products to the world wide major customer's comprehensive industrial area such as Oil & Gas, Chemical & Petrochemical, Water treatment, Nuclear & Power Plant, Offshore platform & Shipbuilding. Our products are applicable for any kinds of severe operating condition such as high pressure and high temperature or cryogenic condition. We are always doing our best to bring up GSEC to be the world's leading company through drastic investment activities in the belief that the best quality is the solid bastion of business survival and customer's satisfaction. In the future, GSEC will provide more value to the customers based on our customer-first policy & quality-first policy.

We are active in virtually all industrial sectors. Our employees have specialist knowledge of sourcing, project management, logistics and stock planning and work closely together with our customers in the Industry and Energy markets. The combination of global logistics and knowledge of products and customer applications makes GSEC a leading company in its markets.

Application Areas

We offer a wide range of Industrial Products which is used in various industries. Such as :

- Sugar Industries
- Chemical Industries
- Fertilizer Plants
- Pharmaceutical Industries
- Oil & Gas Industries
- Power Plant Industries
- Automotive Industries
- Pulp & Paper Mills
- Heat exchangers
- Energy Industries
- Construction Industries



Ambitions

We are driven in our ambitions and in our evolution by what markets and customers require from us, now and in the future. We have increasingly evolved into a service-oriented business, directed at specific markets and customers on the one hand, and on large projects with partnerships and customization on the other hand. We reinforce our leading market positions through organic growth and acquisitions, as well as through continually strengthening and broadening our product portfolio, service delivery and international organization. Our acquisitions are focused on areas in which we do not yet have any in-house specialism, or on geographical areas where we do not yet have a strong presence and want to enlarge our footprint.

Motto

We strive to deliver on time, keeping the tight project schedules of our clients, and maintain high quality in everything we do, from processes to products.

Team of Experts

We have an energetic and talented team of professionals who play crucial role in our success and have been our biggest support in all times. Our work force comprises experienced technical experts, quality analyst, purchase executives, personnel, sales and marketing and skilled labours. Our team of professionals works in synchronization with our manufacturers and clients, there by ensuring all procedures are executed systematically and without any discrepancies. Their dedication and painstaking efforts have helped us serve our domestic as well as our international clients successfully.

Quality Assurance

We have always followed a systematic quality management procedure to maintain the quality standards of our range of industrial products. We adhere to the International quality Standards in procuring our entire range of products. Our team of quality controllers enables us to offer technologically advance products, undertaking stringent quality check in procuring and delivery process.

Customer Satisfaction

We always work bearing in mind the client satisfaction and with goal of establishing long-term customer relationship. So we endeavor to understand and offer them exactly what they require with quality beyond their anticipation.

OUR USP

We are extremely competitive when our clients need:

- complex piping packages, involving the coordination of multiple sources and delivery points
- short time deliveries
- exotic products and/or materials
- qualified origins (West Europe, US, Japan) are mandatory according to project specification.



Stockist Suppliers & Dealers of

Ferrous & Non-Ferrous Metals, S.S. Pipes, Sheets, Coils, Plates, Tubes, Rods Fittings, Welding Electrodes, Filler Wire, Industrial Raw Materials & Interior Designer Architect

PRODUCT RANGE



Stainless Steel : 304/ 304L/ 316/ 316L/ 310/ 904L Etc.
Design : 1PC / 2PC/ 3PC,
Ends : Screwed/ Socket Weld Flanged
Threaded, Size : 15 mm To 100mm
Flanged End, Size : 15mm To 250mm
High Nickel Alloy : Monel, Nickel, Inconel, Hastalloy, Bronze, Brass, Titanium
Rating : 150#/1300#/ 800 #/1500 #
Ends : Screwed / Socket Weld/ Flange End)

FORGED BALL VALVE

BS 6755 / BS 1868

Stainless Steel (Forged), 304, 304L, 316, 316L

ASME B 16.34 API 6D

High Nickel Alloy : Monel, Nickel, Inconel, Hastalloy, Bronze, Brass, Titanium,

Rating : 150#/1300#/ 800# / 1500#

Size : 15 mm To 100 mm,



NON RETURN / SCREWED VALVE



Stainless Steel, Cast Iron : API 609/BS 5155/18S 13095

Size : 15mm To 250mm

Type : Wafer Type, Flange End Type

Ends : Wafer Type/double Flange,

Design : Lug Type

Operation : Lever / Manual Gear

Design : Sure Seal / Replaceable, Rubber Lining

Mfg. Std : BS 5155 / AWWA C 504 API 609/IS 13095

BUTTERFLY VALVE

BS 5352 BS 6755 / BS1813 / BS 6755 ASME B 13.4 DIN 3356

Stainless Steel (Bar Stock)

Rating : 150x300#/800#/1500#, **Size** : 15 Mm To 400 Mm

Forged Carbon Steel S. Steel

Rating : 150# / 300# / 800/1500#, **Size** : 15mm To 400mm

Cast Carbon Steel S.steel Alloy Steel

Rating : 150#/1300#/ 800 #/1500 #, **Size** : 15 Mm To 400 Mm

Cast Iron

Rating :125 / 150#, **Size** : 25mm To 600mm



GLOBAL VALVE

PRODUCT RANGE



Fasteners & Nut Bolts

Stainless Steel : AISI 302, 304, 304L, 316, 316L, 310, 317, 321, 347, 410 420, 904L etc.

Alloy Steel : 4.6, 5.6, 6.6, 8.8, 10.9 & 12.9 'R', 'S', 'T' Conditions.

Carbon Steel : Bare Condition, Galvanized, Phosphetised, Cadmium Plated, Hot Deep Galvanized, Bloodied, Nickel Chrome Plated etc.

Non-Ferrous Metal : Copper, Brass, Aluminium, Titanium, Nichrome, Al-Bronze, Phosphorous Bronze etc.

Type : Bolts, Nuts, Washers, Anchor, Fasteners, Stud Bolts, Eye Bolt, Stud, Threaded Rod, Cotter Pin, Socket, Screw, Fine Fasteners & Spares, Foundation Fasteners etc.

Stainless Steel : As per ASTM A276 & A479 Grade 202 / 304 / 304L / 316 / 316L / 316Ti / 317 / 317L / 321 / 310 / 347 / 410 / 416 / 420 / 430 / 440C / 904 / 303 / 17-4PH, 15-5 PH Etc.

Nickel Alloys : Monel, Inconel, Hastelloy, Nickel, Titanium, Alloy 20

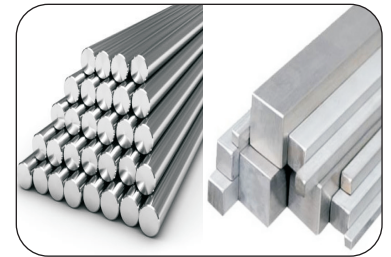
Duplex & Super Duplex : UNS 32205, 31803, 32750, 32760,

Types : Round, Square, Rectangular.

Size : 3mm - 75 mm dia ready stock with Mill Test Certificate

Process : Cold Drawn, Annealed, Export Bright & Black

Tolerance : H9, H11



Round, Square & Hex Bar



Flanges

Stainless Steel : ASTM A182 F304/ 304L/ 304H/316/ 316L/ 317/ 317L/ 321/ 310/ 347/ 904L etc.

Carbon Steel : ASTM A105/ A694F42/46/52/56/60/65/70/A350 LF3/A350 LF2, etc.

Alloy Steel : ASTM A182 F1/ F5/ F9/ F11/ F22/ F91 etc.

Duplex & Super Duplex Steel : UNS S31803, UNS S32750, UNS S32760, 904L, Alloy 20

Others: Monel, Nickel, Inconel, Hastalloy, Copper, Brass, Bronze, Titanium, Tantalum, Bismuth, Aluminium, High Speed Steel, Zinc, Lead, etc.

Types : Weldneck, Slipon, Blind, Socket Weld, Lap Joint, Spectacles, Ring Joint, Oriface, Long Weldneck, Deck Flange, RTJ, Flange

Size : 1/2" NB TO 24" NB.

Class : 150#, 300#, 400#, 600#, 900#, 1500# & 2500#.

Stainless Steel Coils, Sheets & Plates as per ASTM A 240 Gr. TP 202, 304, 304L, 304LN, 309, 309S, 309H, 310S, 310H, 316, 316L, 316H, 316LN, 316TI, 317, 317L, 321, 321H, 347, 347H, 348, 348H, 409, 410, 420, 430 Etc.

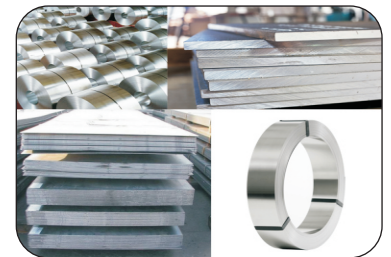
Alloy Steel Plates as per ASTM A 387 Gr. 2, 5, 9, 11, 12 & 22 in class 1 & 2, ASTM A 204, Gr. A & B, DIN 17175 Gr. 15Mo3 & 16Mo3 with IBR Test Certificate.

Carbon Steel / Boiler Quality Plates as per IS 2062 Gr. A, B & C, IS 2002 Gr. 1 & 2, ASTM A516 Gr. 60 & 70 ASTM A515 Gr. 70.

Other Alloys : Monel, Nickel, Inconel, Hastalloy, Copper, Brass, Bronze, Brass, Titanium, Tantalum, Bismuth, Aluminium, High Speed Steel, Zinc, Lead Etc.

Duplex & Super Duplex Steel : UNS S31803, UNS S32750, UNS 532760, 904L, Alloy 20

Types : Sheet, Plates, Strips Etc.



Sheet, Plate & Coil



Buttweld Fittings

Stainless Steel : ASTM A403 WP 304/ 304L/ 304H/316/ 316L/ 317/ 317L/ 321/ 310/ 347/904L etc.

Carbon Steel : ASTM A234 WPB/A420 WPL3/A420 WPL6/ MSS-SP-75 WPHY 42/46/52 / 56/60/65/70

Alloy Steel : ASTM A234 WP1/WP5/WP9/ WP11/WP22/WP91 etc.

Duplex & Super Duplex Steel : UNS S31803, UNS S32750, UNS S32760,

Others : Monel, Nickel, Inconel, Hastalloy, Copper, Brass, Bronze, Titanium, Tantalum, Bismuth, Aluminium, High Speed Steel, Zinc, Lead, 904L, Alloy 20 etc.

Types : Elbow, Tee, Reducer, Return Bends, Stub-Ends, Cap, Collar, Cross, Insert etc.

Size : 1/4" NB TO 32" NB. (Seamless & Welded)

Wall Thickness : Sch. 5S To Sch. XXS.

PRODUCT RANGE



Forged Socketweld & Screwed Fittings

Stainless Steel : ASTM A182 F304/ 304L/ 304H/ 316/ 316L/ 317/ 317L/ 321/310/ 347/ 904L etc.

Carbon Steel : ASTM A105 /A694 F42/46/ 52/56/ 60/ 65/70 / A350 LF3/ A350 LF2.

Alloy Steel : ASTM A182 F1/ F5/ F9/ F11/ F22/F91 etc.

Others : Monel, Nickel, Inconel, Hastalloy, Copper, Brass, Bronze, Titanium, Tantalum, Bismuth, Aluminium, High Speed Steel, Zinc, Lead, etc.

Types : Elbow, Tee, Union, Cross, Coupling, Cap, Bushing , Plug, Swage Nipple, Welding Boss, Hexagon Nipple, Barrel Nipple, Welding Nipple, Parallel Nipple, Street Elbow, Hexagon Nut, Hose Nipple, Bend, Adapter, Insert, Weldolet, Elbowlet, Sockolet, Thredolet, Nipolet, Letrolet, etc.

Size : 1/4" NB TO 4" NB. (Socketweld & Threaded)

Class : 3000#, 6000#, 9000#.

Stainless Steel : ASTM A182 F304/ 304L/ 304H/ 316/ 316L/ 317/ 317L/ 321/310/347/ 904L Etc.

Carbon Steel : ASTM A105 / A694 F42/46/ 52/56/ 60/65/70 /A350 LF3/ A350 LF2.

Alloy Steel : ASTM A182 F1/ F5/ F9/ F11/ F22/F91 Etc.

Duplex & Super Duplex Steel : UNS S31803, UNS S32750, UNS S32760

Other Alloys : Monel, Nickel, Inconel, Hastalloy, Copper, Brass, Bronze, Titanium, Alloy 20 Etc.

Types : Nipples, Adaptors, Crosses, Union Ball Joints, Reducing Bushing, Reducers, Pipe Caps, Couplings, Pipe Plug, Hollow Hex Plug, Elbow, Reducing Union, 90 Deg. Union Elbow, Reducing 90 Deg. Union Elbow Etc. Extender Leg 90 Deg. Union Elbow, 45 Deg. Union Elbow, Union Tee, Female Connector, Male Connector, Manifold Tee, Locator Union, Extended Run Leg Union Tee, Reducing Tee, Tribow, ATW Weld Ring, Tube Socket weld To Pipe Butt Weld, Tube Butt Weld To Tube Socket Weld, Port Connector Etc.



Ferrule Fittings



Dairy Fittings

Stainless Steel : AISI 304, 304L, 316, 316L, 310, 317, 317L, 321, 347, 904L etc.

Carbon Steel : A105, A216, Gr. WCB, Cadmium Plated, Nickel, chrome Plated etc.

Non-Ferrous Metal : Copper, Brass, Titanium, Phosphorous Bronze etc.

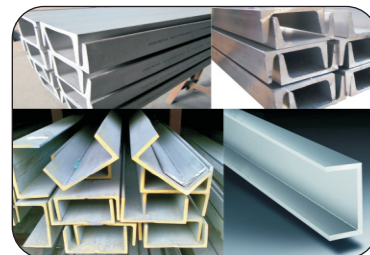
Type : Nipple, Dairy Fittings, Union, S.M.S., I.D.F., Dairy Valve, Butterfly Valve, Ball Valve, Needle Valve, N.R.V. Valve, Float Valve, Safety Valve, Cock Valve, Syphon Tube

FLATS, ANGLE, CHANNEL & BEAM

Stainless Steel: SA 240 TP 304/ 304L/ 304H/ 316/ 316L/ 316Ti/ 317/ 317L/ 321/ 309/ 310/ 347/ 409/ 410/ 430/ 904L Etc.

Other Alloys : Nickel, Monel, Inconel, Hastelloy, Alloy20, Incoloy, Duplex & Super Duplex, 5M06-254, Carbon Steel, Alloy Steel, Copper, Brass, Cupro Nickel, Aluminium, Titanium Etc.,

Types : Angle, Channel, Flat Bar, Beams Etc.



Flat, Angle, Channel & Beam



OLETS

Elements : Nippolet, Elbowlet, Letrolet, Sockolet & Weldolet, Thredolet

Stainless Steel ASTM A-182, F304L, 316L, 310, 904L

Carbon Steel ASTM A 105

Size : B/W Standard & Extra Long 1/8" To 24", Sch. 160 1/2" To 6" 3000# Threaded And S/W 1/8" To 4", 6000# Threaded And S/W 1/2" To 2"

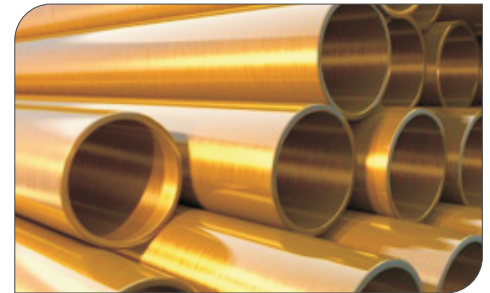
Rating : 3000# (for Small Bore Branches)

Ends : Nippolet : Plain End, Sockolet : S/W End, Weldolet & Elbowlet : B/W, Letrolet : S/W, B/W (as Per Branch Size)

Grade : Duplex, Super Duplex, Inconel, Monel, Hastelloy C, Nickel Alloy, Alloy 20 Etc.

Dim Standard : MSS-SP-97

BRASS TUBES



Copper

DHP Copper, ETP Copper, DPA Copper OFHC Copper

BRASS

63 / 37 Brass, 70 / 30 Brass, Admiralty Brass, Aluminium Brass & other Compositions of Brass.

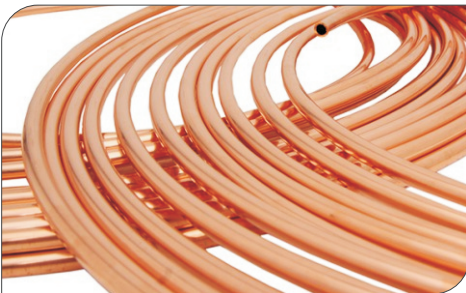
CUPRONICKEL

95 / 5 alloy, 90 / 10 alloy & 70 / 30 alloy.

BRONZES

Phosphorous Bronze Aluminium Bronze & Gun Metal, Phosphorous Bronze A B1 / A B2 Bush Round.

COPPER TUBES



TUBES

2mm OD to 200mm OD with Wall thickness of 0.10 mm to 15 mm in length upto 10 mtrs straight (in coils upto 25 mtrs) in copper, Brass & Curpronickel.

RODS

In all size upto 160mm diameter in Copper, Brass and Bronzes.

STRIPS / PROFILES

Copper Strips and sections as per clients specific requirements.

WIRES

Copper wires upto 42 swg in bright annealed condition.

S. E. WIRES

Super enamelled copper wires upto 42 swg.

BRASS RODS



SPECIFICATIONS

Indian Standard Specification (ISS)
British Standard Specification (BSS)
American Standard for Testing of Material (ASTM)
As per Parties Specific Specification.

COPPER TUBE & SECTIONS

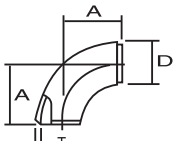


TESTING FACILITIES

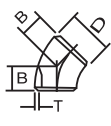


- Chemical Analysis
- Physical Testing
- Hardness Testing
- Hydrostatic Testing
- Pneumatic Testing
- Stress Corrossion Testing
- Dimensional Inspection
- Destructive Testing- Flattening,
- Drift Test,
- Bend Test etc.
- NDT - Eddy Current Testing

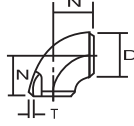
Butt Welding Pipe Fittings Dimensional Standard ANSI B-16.9, B-16.28



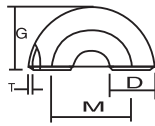
90°Elbow
long radius



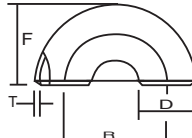
45°Elbow



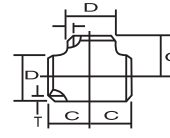
90°Elbow
short radius



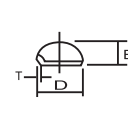
180°Return Bend
short radius



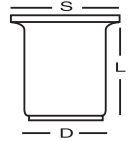
180°Return Bend
long radius



Tee equal



Caps



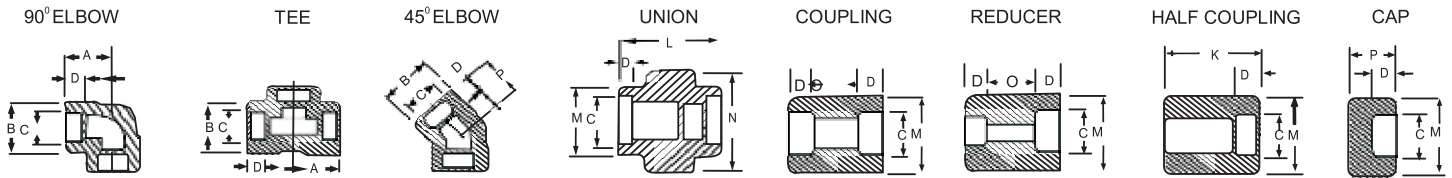
Stubend

Nominal Pipe Size		Outside Diameter	Center to Face				Back to Face			Center to Center			Length 'L'	
Inch.	mm	D	A	B	C	N	E	F	G	R	M	S	MSS SP43	ANSI B 16.9
1/2	15	21.3	38	16	25	—	25	48	—	76	—	34.9	50.8	76.2
3/4	20	26.7	38	11	29	—	25	43	—	57	—	42.8	50.8	76.2
1	25	33.4	38	22	38	25	38	56	41	76	51	50.8	50.8	101.6
1 1/4	32	42.2	48	25	48	32	38	70	52	95	64	63.5	50.8	101.6
1 1/2	40	48.3	57	29	57	38	38	83	62	114	76	73.0	50.8	101.6
2	50	60.3	76	35	64	51	38	106	81	152	102	92.0	63.5	152.4
2 1/2	65	73.0	95	44	76	64	38	132	100	191	127	104.8	63.5	152.4
3	80	88.9	114	51	86	76	51	159	121	229	152	127.0	63.5	152.4
3 1/2	90	101.6	133	57	95	89	64	184	140	267	178	139.7	76.2	152.4
4	100	114.3	152	64	105	102	64	210	159	305	203	157.2	76.2	152.4
5	125	141.3	190	79	124	127	76	262	197	381	254	185.7	76.2	203.2
6	150	168.3	229	95	143	152	89	313	237	457	305	215.9	88.9	203.2
8	200	219.1	305	127	178	203	102	414	313	610	406	270.0	101.6	203.2
10	250	273.1	381	159	216	254	127	518	391	762	508	324.0	127.0	254.0
12	300	323.9	457	190	254	305	152	619	467	914	610	381.0	152.4	254.0
14	350	355.6	533	222	279	356	165	711	533	1067	711	412.8	152.4	305.0
16	400	406.4	610	254	305	406	178	813	610	1219	813	470.0	152.4	305.0
18	450	457.2	686	286	343	457	203	914	686	1372	914	533.4	152.4	305.0
20	500	508.0	762	318	381	508	229	1016	762	1524	1016	584.2	152.4	305.0
22	550	559.0	838	343	419	559	254	1118	838	1676	1118	614.4	152.4	305.0
24	600	610.0	914	381	432	610	267	1219	914	1829	1219	692.2	152.4	305.0
26	650	660.0	991	406	495	660	267	—	—	—	—	—	—	—
28	700	711.0	1067	438	521	711	267	—	—	—	—	—	—	—
30	750	762.0	1143	470	559	762	267	—	—	—	—	—	—	—
32	800	813.0	1219	502	597	813	267	—	—	—	—	—	—	—
34	850	864.0	1295	533	635	864	267	—	—	—	—	—	—	—
36	900	914.0	1372	565	673	914	267	—	—	—	—	—	—	—
38	950	965.0	1448	600	711	965	305	—	—	—	—	—	—	—
40	1000	1016.0	1524	632	749	1016	305	—	—	—	—	—	—	—
42	1050	1067.0	1600	660	762	1067	305	—	—	—	—	—	—	—
44	1100	1118.0	1676	695	813	1118	343	—	—	—	—	—	—	—
46	1150	1168.0	1753	727	851	1168	343	—	—	—	—	—	—	—
48	1200	1219.0	1829	759	889	1219	343	—	—	—	—	—	—	—



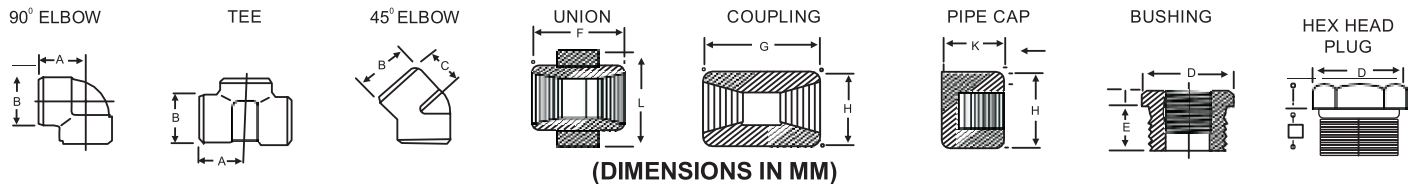
FORGED SCREWED & SOCKET WELD

SOCKET WELD FITTING TO ANSI B-16.11



NOM BORE	PIPE O.D.	3000 LBS.									COMMON FACTORS				6000 LBS.				
		A max.	B max.	K	J	L	M	N	P	Q	C min.	D min.	O min.	O max.	A	B	M	K	N
1/8"	10.3	22	18.5	26	16	40	17.3	32	15	10	10.7	10	5	8	22	22	20	25	46
1/4"	13.7	22	22	26	18	43	21.2	32	15	10	14.1	10	5	8	27	25	24	25	51
3/8"	17.2	25	25	26	19	48	25.4	36	16.5	10	17.6	10	3	9	27	28	28	26	60
1/2"	21.3	27	32	30	21	51	31	41	16.5	10	21.7	10	6	13	31	34	34	31	72
3/4"	26.7	34	38	36	24	57	37	50	19.5	13	27	13	6	13	37	42	41	35	80
1"	33.4	37	46	40	25	64	45.2	60	22.5	13	33.8	13	9	17	42	50	50	40	94
1 1/4"	42.2	42	56	40	29	70	55	70	22.5	13	42.6	13	9	17	47	59	58	41	100
1 1/2"	48.3	47	62	40	30	79	61.4	78	24	13	48.7	13	9	17	53	67	66	43	122
2"	60.3	56	75	52	37	89	75	95	29	13	61.2	16	15	23	59	84	83	55	
2 1/2"	73.02	60	92	52	48	114	91.3	125	32	16	73.8	16	14	24		102		56	
3"	89.00	76	110	52	51	127	108.8	140	35	16	89.8	16	14	24		121		58	
4"	114.50	88	137	58		150	136.9		42	19	115.5	19	14	24		152		64	

FORGED SCREWED FITTING TO ANSI B-16.11 3000/6000 LBS. THREADED TO ASA B 2.1



(DIMENSIONS IN MM)

NOM BORE	PIPE O.D.	3000 LBS						COMMON FACTORS						6000 LBS					
		A	B	C	G	H	K	D	E	F	I	J	L	A	B	C	G	H	K
1/8"	10.3	21	22	17	32	16	19	11	10	40	-	6	-	25	25	19	32	22	-
1/4"	13.7	25	25	19	35	19	25	16	11	43	3	6	32	29	33	22	35	25	27
3/8"	17.2	29	33	22	38	22	25	17.5	13	48	4	8	38	33	38	25	38	32	27
1/2"	21.3	33	38	25	48	29	32	22	15	51	5	8	46	38	46	29	48	38	33
3/4"	26.7	38	46	29	51	35	37	27	16	57	6	10	51	44	56	33	51	44	38
1"	33.4	44	56	33	60	44	41	35	19	64	6	10	60	51	62	35	60	57	43
1 1/4"	42.2	51	62	35	67	57	44	44.5	21	70	7	14	72	60	75	43	67	64	46
1 1/2"	48.3	60	75	43	79	64	44	51	21	79	8	16	80	64	84	44	79	76	48
2"	60.3	64	84	45	86	76	48	63.5	22	88	9	17	94	83	102	52	86	92	51
2 1/2"	73.02	83	102	52	92	92	60	76	27	118	10	21	122	95	121	64	92	108	64
3"	89.0	95	121	64	108	108	65	89	29	121	10	25	140	106	146	79	108	127	68
4"	114.5	114	152	79	121	140	68	117.5	32	150	13	25	180	114	152	79	121	159	75

DIMENSIONS AND OTHERS SPECIFICATIONS AS PER CUSTOMERS REQUIREMENTS ARE AVAILABLE ON REQUEST

COMPARISON OF AISI AND SAE STAINLESS STEEL STANDARDS WITH APPROXIMATELY

USA		West Germany	Great Britain	Poland	Romania	Soviet Union		Sweden			
AISI	SAE	Standard No.	DIN Designation	BS 970 Part 4.1970	En Steel replaced	Spec. replaced	Spec. No. PN.	Spec. No. STAS	Type	GOST	SIS-14
301	30301	1.4310	X12Cr.Ni177	301S21							
302	30302	1.4300	X12Cr.ni.188	302S25	58						2331
302B	30302B	1.4330									
303	30303	1.4305	X12Cr.Nis 188	303S21	58M						2346
303Se	30303Se	1.4305	x5Cr.Nis 188	303S41	58M						2346
304	30304	1.4301	X5Cr.Ni189	304S 15	58E	86020	OH18N9	3583	7NC 180	08Kh18N10	2332/ 2333
304L	30304L	1.4306	X5Cr. Ni.189	304S 15		85020	OOH18N10				2352
309	30309	1.4828	X15CrNiSi20 12	309S24		86022	H20N1882	3583	158NC200	20Kh20N 14S2	
309S	30309S										
310	30310	1.4841	X15CrNiSi2520	310S24		86022	H25N20S2	3583	15SNC250	20Kh25N20S2	
310S	30310S	1.4845	X5CrNi2521			86022	H23N 18				2361
316	30316	1.4401	Z5CrNiMo1810	316S16	58J			6855	T12MSMoNC10		2347/ 2343
316L	30316L	1.4404	X2CrNiMo1810	316S12		86020	OOH17N14M2				2353
317	30317	10449	X5CrNiMo1713	317S16							
317L		1.4435	X2CrNiMo1812	317S12						08Ch17N14M2	
321	30321	1.4541	X10CrNiTi189	321S20			OH18N9T	3583	7TNC180	1Kh18N10T	2337
				321S12	58B&58C	86020	OH18NiCT				
347	30347	1.4550	X10CRNiNb189	347S17	58F&58G	86020	OH18N12Nb	3583	7NbNC180	08Kh18N12B	2338
403	51403	1.4006	X10Cr13	403S17				3583	12C130	12Kh13	2302
405	51405	1.4002	X7CrA113			86020	OH13J				
410	51410	1.4006	X10Cr13	410S21	56A			3583	12C130	12Kh13	2302
414	51414										
416	51416	1.4005	X12CrS13	416S21	56AM						
416Se	51416Se			416S41	56AM						
420	51420	1.4021	X20Cr13	420S37	56C	86020	2H13	3583	20C130	20Kh13	2302
420F	51420F										
430	51430	1.4016	X8Cr17	430S15	60	86020	H17	3583	10C170	20Kh17	2320
430FSe	51430FSe	1.4104	X12CrMoS17								
431	51431	1.4057	X22CrNi17	431S20	57	86020	2H17N2			12Kh17N2	2321
436	51446										2322

CHEMICAL COMPOSITION OF STAINLESS STEEL / MECHANICAL PROPERTIES

Grade designation	C %	MN %	SI %	S %	P %	CR %	NI %	MO %	TI %	UTS	YS	% EL	R.A %
AISI	MAX	MAX	MAX	MAX	MAX					Kg/mm ² min	(0.2% Offset Kg/mm ² min	Min	
302	0.15	2.00	0.75	0.030	0.045	17.00	8.00			53	21	40	50
						19.00	10.00						
304	0.08	2.00	0.75	0.030	0.045	18.00	8.00			53	21	40	50
						20.00	12.00						
304L	0.03	2.00	0.75	0.030	0.045	18.00	8.00			53	21	40	50
						20.00	12.00						
309	0.20	2.00	0.75	0.030	0.045	22.00	12.00			53	21	40	50
						24.00	15.00						
309S	0.08	2.00	0.75	0.030	0.045	22.00	12.00			53	21	40	50
						24.00	15.00						
310	0.25	2.00	0.75	0.030	0.045	24.00	19.00			53	21	40	50
						26.00	22.00						
310S	0.08	2.00	0.75	0.030	0.045	24.00	19.00			53	21	40	50
						26.00	22.00						
316	0.08	2.00	0.75	0.030	0.045	16.00	10.00	2.00		53	21	40	50
						18.00	14.00	3.00					
316L	0.03	2.00	0.75	0.030	0.045	16.00	10.00	2.00		53	21	40	50
						18.00	14.00	3.00					
316Ti	0.08	2.00	0.75	0.030	0.045	16.00	10.00	2.00	5xC				
						18.00	14.00	3.00	min				
317	0.08	2.00	0.75	0.030	0.045	16.00	10.00	3.00					
						18.00	14.00	4.00					
321	0.08	2.00	0.75	0.030	0.045	17.00	9.00		5xC	53	21	40	50
						19.00	12.00		min				
347	0.08	2.00	0.75	0.030	0.045	17.00	9.00	NS+	To				
						19.00	13.00	10xC	min				
410	0.15	1.00	0.75	0.030	0.040	11.50				49	28	20	50
						13.50							
420	0.15	1.00	0.75	0.030	0.040	12.00				49	28	20	45
						14.00							
430	0.12	1.00	0.75	0.030	0.040	16.00				49	28	20	45
						18.00							
431	0.20	1.00	0.75	0.030	0.040	15.00				49	28	20	45
						17.00							



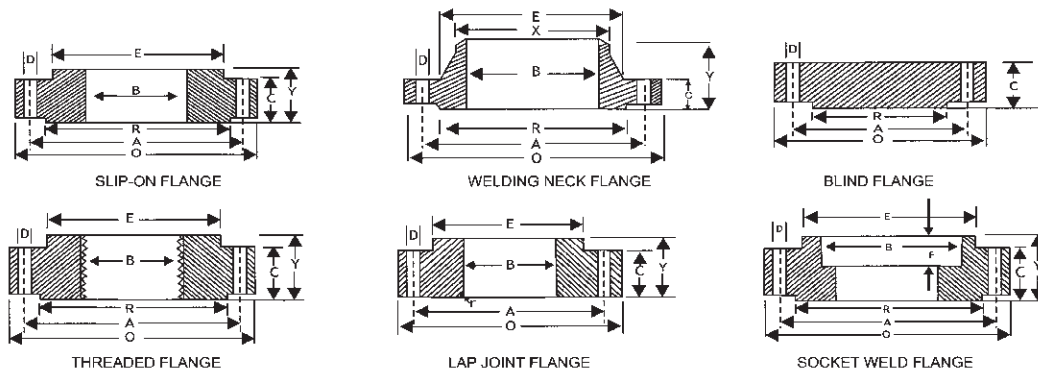
FLANGES.....

- Stainless Steel
- Nickel Alloy & Duplex Steel
- Carbon Steel

Stainless Steel	: ASTM A182, F304,304L,304H,316, 316L,317,317L,321,310,347,904L
Duplex & Super Duplex	: UNS S31803, UNS S32750, UNS S32760,
Hastelloy Alloy	: ASTM B564 Hastelloy B2, C276, C22
Incoloy Alloys	: ASTM B564 Alloy 20, Alloy A286 Alloy 800H/800HT, Alloy 825,
Inconel Alloys	: ASTM B564 Alloy 600, Alloy 601, Alloy 625, Alloy 718, Alloy 725,
Monel Alloys	: ASTM B564 Monel 400, Monel K500.
Carbon Steel	: ASTM A105,A694 F42,A350 Lf2
Alloy Steel	: ASTM A182 F1,F5,F9,F11,F22,F91
Size	: 1/2" NB TO 72" NB
Class	: 150#, 300#, 600#, 900#, 1500# & 2500#.



- TYPE**
- SLIP-ON FLANGE
 - LAP JOINT FLANGE
 - WELDNECK FLANGE
 - ORIFACE FLANGE
 - LONG WELD NECK FLANGE
 - THREADED FLANGE
 - SOCKETWELD FLANGE
 - BLIND FLANGE (DUMMY FLANGE)
 - RTJ FLANGE
 - TABLE FLANGES (D, E, F, H TABLE)



Dimensions of Class 150 Flanges as per ANSI B 16.5

Nominal Pipe Size (MM) (INCH.)	Flange Dia O	Dia of Bolt Circle A	Dia of Bolt Holes D	No. of Holes	Thk. of Flange C	Dia of Hub E	Length through Hub			Dia of Bore		Dia of R/F R	Depth of Socket F	
							S/O & S/W Y	W/N Y	L/J Y	S/O & S/W B	L/J B			
15	1/2	88.9	60.3	15.9	4	11.1	30.2	15.9	47.6	15.9	22.3	22.9	34.9	9.5
20	3/4	98.4	69.8	15.9	4	12.7	38.1	15.9	52.4	15.9	27.7	28.2	42.9	11.1
25	1	107.9	79.4	15.9	4	14.3	49.2	17.5	55.6	17.5	34.5	35.0	50.8	12.7
32	1 1/4	117.5	88.9	15.9	4	15.9	58.7	20.6	57.1	20.6	43.2	43.7	63.5	14.3
40	1 1/2	127.0	98.4	15.9	4	17.5	65.1	22.2	61.9	22.2	49.5	50.0	73.0	15.9
50	2	152.4	120.6	19.0	4	19.0	77.8	25.4	63.5	25.4	62.0	62.5	92.1	17.5
65	2 1/2	177.8	139.7	19.0	4	22.2	90.5	28.6	69.8	28.6	74.7	75.4	104.8	19.0
80	3	190.5	152.4	19.0	4	23.8	107.9	30.2	69.8	30.2	90.7	91.4	127.0	20.6
100	4	228.6	190.5	19.0	8	23.8	134.9	33.3	76.2	33.3	116.1	116.8	157.2	23.8
125	5	254.0	215.9	22.2	8	23.8	163.5	36.5	88.9	36.5	143.8	144.5	185.7	23.8
150	6	279.4	241.3	22.2	8	25.4	192.1	39.7	88.9	39.7	170.7	171.4	215.9	27.0
200	8	342.9	298.4	22.2	8	28.6	246.1	44.4	101.6	44.4	221.5	222.2	269.9	31.7
250	10	406.4	361.9	25.4	12	30.2	304.8	49.2	101.6	49.2	276.3	277.4	323.8	33.3
300	12	482.6	431.8	25.4	12	31.8	365.1	55.6	114.3	55.6	327.1	328.2	381.0	39.7
350	14	533.4	476.2	28.6	12	34.9	400.0	57.1	127.0	79.4	359.1	360.2	412.7	41.3
400	16	596.9	539.7	28.6	16	36.5	457.2	63.5	127.0	87.3	410.5	411.2	469.9	44.4
450	18	635.0	577.8	31.7	16	39.7	504.8	68.3	139.7	96.8	461.8	462.3	533.4	49.2
500	20	698.5	635.0	31.7	20	42.9	558.8	73.0	144.5	103.2	513.1	514.3	584.2	54.0
600	24	812.8	749.3	34.9	20	47.6	663.6	82.5	152.4	111.1	615.9	615.9	692.1	63.5

Dimensions of Class 300 Flanges as per ANSI B 16.5

Nominal Pipe Size (MM) (INCH.)	Flange Dia O	Dia of Bolt Circle A	Dia of Bolt Holes D	No. of Holes	Thk. of Flange C	Dia of Hub E	Length through Hub			Dia of Bore		Dia of R/F R	Depth of Socket F	
							S/O & S/W Y	W/N Y	L/J Y	S/O & S/W B	L/J B			
15	1/2	95.2	66.7	15.9	4	14.3	38.1	22.2	52.4	22.2	22.3	22.9	34.9	9.5
20	3/4	117.5	82.5	19.0	4	15.9	47.6	25.4	57.1	25.4	27.7	28.2	42.9	11.1
25	1	123.8	88.9	19.0	4	17.5	54.0	27.0	61.9	27.0	34.5	35.0	50.8	12.7
32	1 1/4	133.3	98.4	19.0	4	19.0	63.5	27.0	65.1	27.0	43.2	43.7	63.5	14.3
40	1 1/2	155.6	114.3	22.2	4	20.6	69.8	30.2	68.3	30.2	49.5	50.0	73.0	15.9
50	2	165.1	127.0	19.0	8	22.2	84.1	33.3	69.8	33.3	62.0	62.5	92.1	17.5
65	2 1/2	190.5	149.2	22.2	8	25.4	100.0	38.1	76.2	38.1	74.7	75.4	104.8	19.0
80	3	209.5	168.3	22.2	8	28.6	117.5	42.9	79.4	42.9	90.7	91.4	127.0	20.6
100	4	254.0	200.0	22.2	8	31.8	146.0	47.6	85.7	47.6	116.1	116.8	157.2	23.8
125	5	279.4	234.9	22.2	8	34.9	177.8	50.8	98.4	50.8	143.8	144.5	185.7	-
150	6	317.5	269.9	22.2	12	36.5	206.4	52.4	98.4	52.4	170.7	171.4	215.9	-
200	8	381.0	330.2	25.4	12	41.3	260.3	61.9	111.1	61.9	221.5	222.2	269.9	-
250	10	444.5	387.3	28.6	16	47.6	320.7	66.7	117.5	95.2	276.3	277.4	323.8	-
300	12	520.7	450.8	31.7	16	50.8	374.6	73.0	130.2	101.6	327.1	328.2	381.0	-
350	14	584.2	514.3	31.7	20	54.0	425.4	76.2	142.9	111.1	359.1	360.2	412.7	-
400	16	647.7	571.5	34.9	20	57.2	482.6	82.5	146.0	120.6	410.5	411.2	469.9	-
450	18	711.2	628.5	34.9	24	60.3	533.4	88.9	158.7	130.2	461.8	462.3	533.4	-
500	20	774.7	685.8	34.9	24	63.5	587.4	95.2	161.9	139.7	513.1	514.3	584.2	-
600	24	914.4	812.8	41.3	24	69.8	701.7	106.4	168.3	152.4	615.9	615.9	692.1	-

All Dimensions are in Millimeters Flanges except Lap Joint will be furnished with (1.6) Raised Face, which is included in "Thickness(C)" and "Length through Hub(Y)"

Dimension of Pipe Flanges as per Table BS-10

TABLE - D

For Working Stream Pressure above 250 lbs and upto 350 lbs per sq. inch

Nominal Pipe Size (in m)	Dia. of Flang	Dia. of Bolt Circle (PCD)	No. of Bolt	Dia. of Bolt	Thickness of Flange
mm	mm	mm	mm	mm	mm
15	95	67	4	13	5
20	102	73	4	13	5
25	114	83	4	13	5
32	121	87	4	13	6
40	133	98	4	13	6
50	152	114	4	16	8
65	165	127	4	16	8
80	184	145	4	16	10
100	216	178	4	16	10
125	254	210	8	16	13
150	279	235	8	16	13
200	337	292	8	16	13
250	406	356	8	19	16
300	457	406	12	19	16
350	527	470	12	22	19
400	578	521	12	22	19
450	641	584	12	22	22
500	705	641	16	22	25
600	826	756	16	25	29

TABLE - E

For Working Stream Pressure above 350 lbs and upto 450 lbs per sq. inch

Nominal Pipe Size (in mm)	Dia. of Flang	Dia. of Bolt Circle(PCD)	No. of Bolt	Dia. of Bolt	Thickness of Flange
mm	mm	mm	mm	mm	mm
15	95	67	4	13	6
20	102	73	4	13	6
25	114	83	4	13	7
32	121	87	4	13	8
40	133	98	4	13	9
50	152	114	4	16	10
65	165	127	4	16	10
80	184	145	4	16	11
100	216	178	8	16	13
125	254	210	8	16	14
150	279	235	8	19	17
200	337	292	8	19	19
250	406	356	12	19	22
300	457	406	12	22	25
350	527	470	12	22	25
400	578	521	12	22	25
450	641	584	16	22	29
500	705	641	16	22	32
600	826	756	16	25	38

TABLE - F

For Working Stream Pressure above 250 lbs and upto 350 lbs per sq. inch

Nominal Pipe Size (in mm)	Dia. of Flang	Dia. of Bolt Circle (PCD)	No. of Bolt	Dia. of Bolt	Thickness of Flange
mm	mm	mm	mm	mm	mm
15	95	67	4	13	10
20	102	73	4	13	10
25	121	87	4	16	10
32	133	98	4	16	13
40	140	105	4	16	13
50	165	127	4	16	16
65	184	145	8	16	16
80	203	165	8	16	16
100	229	191	8	16	19
125	279	235	8	19	22
150	305	260	12	19	22
200	368	324	12	19	25
250	432	381	12	22	25
300	489	438	16	22	29
350	552	495	16	25	32
400	610	552	20	25	32
450	673	610	20	29	35
500	737	673	24	29	38
600	851	781	24	32	38

TABLE - H

For Working Stream Pressure above 350 lbs and upto 450 lbs per sq. inch

Nominal Pipe Size (in mm)	Dia. of Flang	Dia. of Bolt Circle(PCD)	No. of Bolt	Dia. of Bolt	Thickness of Flange
mm	mm	mm	mm	mm	mm
15	114	83	4	16	13
20	114	83	4	16	13
25	121	87	4	16	14
32	133	98	4	16	17
40	140	105	4	16	17
50	165	127	4	16	19
65	184	145	8	16	19
80	203	165	8	16	22
100	229	191	8	16	25
125	279	235	8	19	29
150	305	260	12	19	29
200	368	324	12	19	32
250	432	381	12	22	35
300	489	438	16	22	38
350	552	495	16	25	41
400	610	552	20	25	44
450	673	610	20	29	48
500	737	673	24	29	51
600	851	781	24	32	57



MAHENDRA HATDIA
 Cell : +91-84528 28260



GOGA STAINLESS

FERROUS & NON-FERROUS METALS

AN ISO 9001:2015 CERTIFIED COMPANY

Stockists & Supp. of : Stainless Steel AISI 304, 304L, 316, 316L, 310, 409, 410, 430, Plates, Rods, Square, Hex, Seamless & ERW Pipes, Tubes, Copper, Brass, Monel, Nickel, Alloy Steel etc. **Specialist in. : S. S. FORGING & BUT WELD PIPE FITTINGS.**

Plot No-408/428, Har-Har Wala Bldg, House No-62A, 3rd Floor, P.B. Marg, Mumbai-400 004
 MUMBAI-400004 • Tel. : +91-22-6659 5141 • Cell : +91-84528 28260
 E-mail : gogastainless@gmail.com • Web.: www.gogastainless.com